

AtlantiOS

Installation and Configuration Guide

15/12/2016, 1.0.0

part of Atlantion Infrastructure

Table of Contents

1. REQUIREMENTS	2
2. INSTALLATION	3
2.1) Boot installation media	3
2.2) AtlantiOS Installer	4
2.3) Management Network Configuration	5
2.3.1) Network Interface Adapter (NIC) selection	5
2.3.2) Management network configuration parameters	6
2.4) Disk configuration.....	7
2.4.1) Disk selection	7
2.5) Installation	8
2.6) Boot AtlantiOS.....	10
2.7) AtlantiOS main screen	11
2.7.1) AtlantiOS Default Username and Password	11
3. CONFIGURATION.....	12
3.1) Maintenance	12
3.1.1) Entering maintenance mode.....	12
3.1.2) Maintenance mode main screen	13
3.1.3) Network configuration	14
3.1.3.1) Hostname, DNS servers and Default gateway	15
3.1.3.2) Network Adapters IP addresses.....	16
3.1.3.3) VLAN Interfaces	16
3.1.3.4) Network diagnostic tools	17
3.1.4) Credio profile configuration	18
3.1.5) Clock configuration	19
3.1.6) Shell.....	19
3.2) Services	20
3.3) Reboot / Shutdown	21

1. Requirements

Table 1: Supported Hypervisors Type-1

	VMWare ESX / ESXi	Microsoft Hyper-V	Oracle Oracle VM Server	Citrix XenServer	KVM
AtlantiOS	✓	✓	✓	✓	✓

Table 2: Supported Hypervisors Type-2

	VMWare Workstation / Player	Microsoft Hyper-V	Oracle VirtualBox	QEMU	KVM
AtlantiOS	✓	✓	✓	✓	✓

Table 3: Virtual machine minimum requirements

CPU 64-bit	1	32-bit CPU is not supported
RAM	512 MB	
Hard Drive	3 GB	
Network Adapter	1	
Boot firmware	EFI or BIOS	EFI preferred

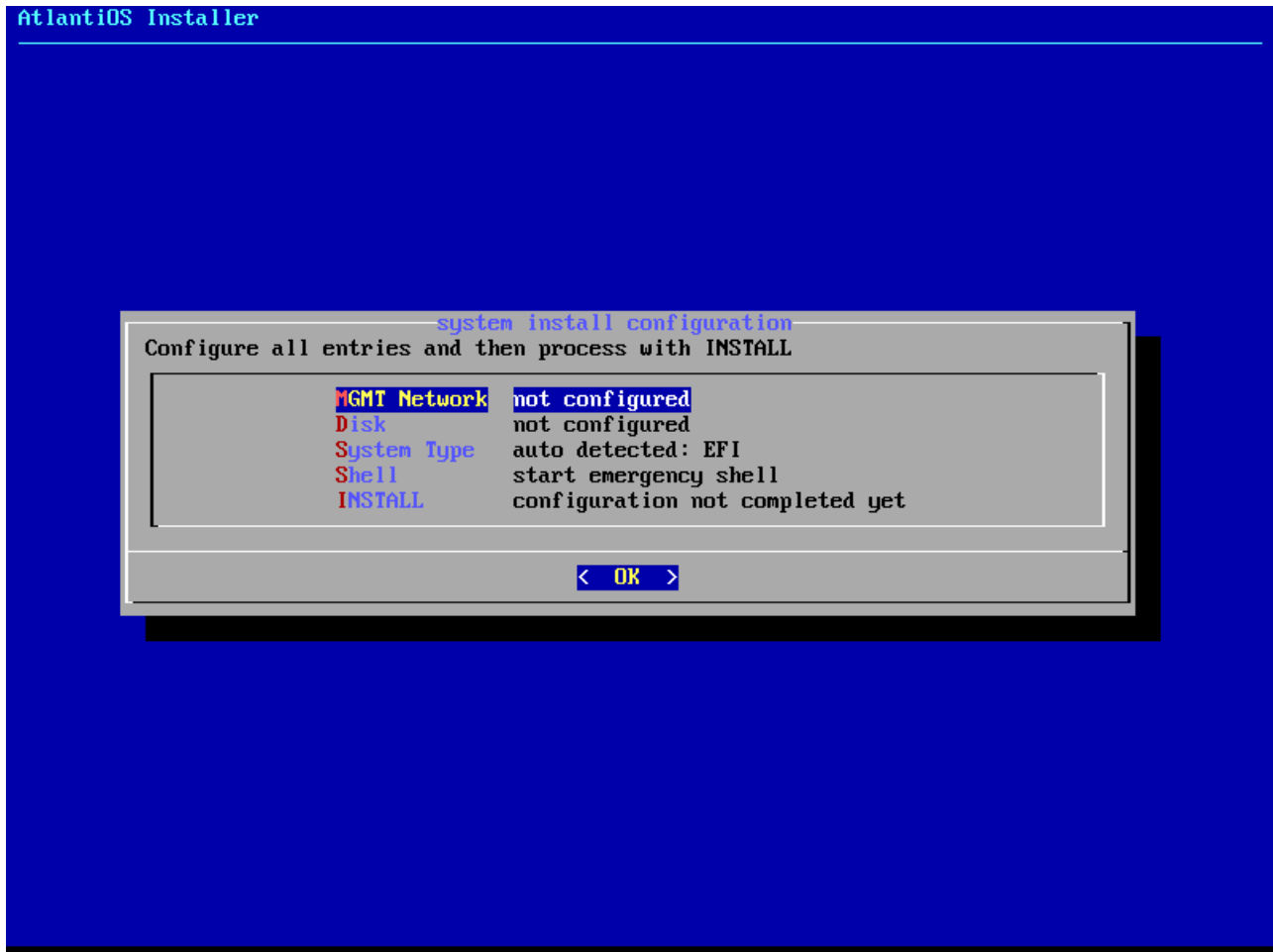
2. Installation

AtlantiOS installer will be automatically launched after AtlantiOS has boot from installation media and will guide you through installation process.

2.1) Boot installation media

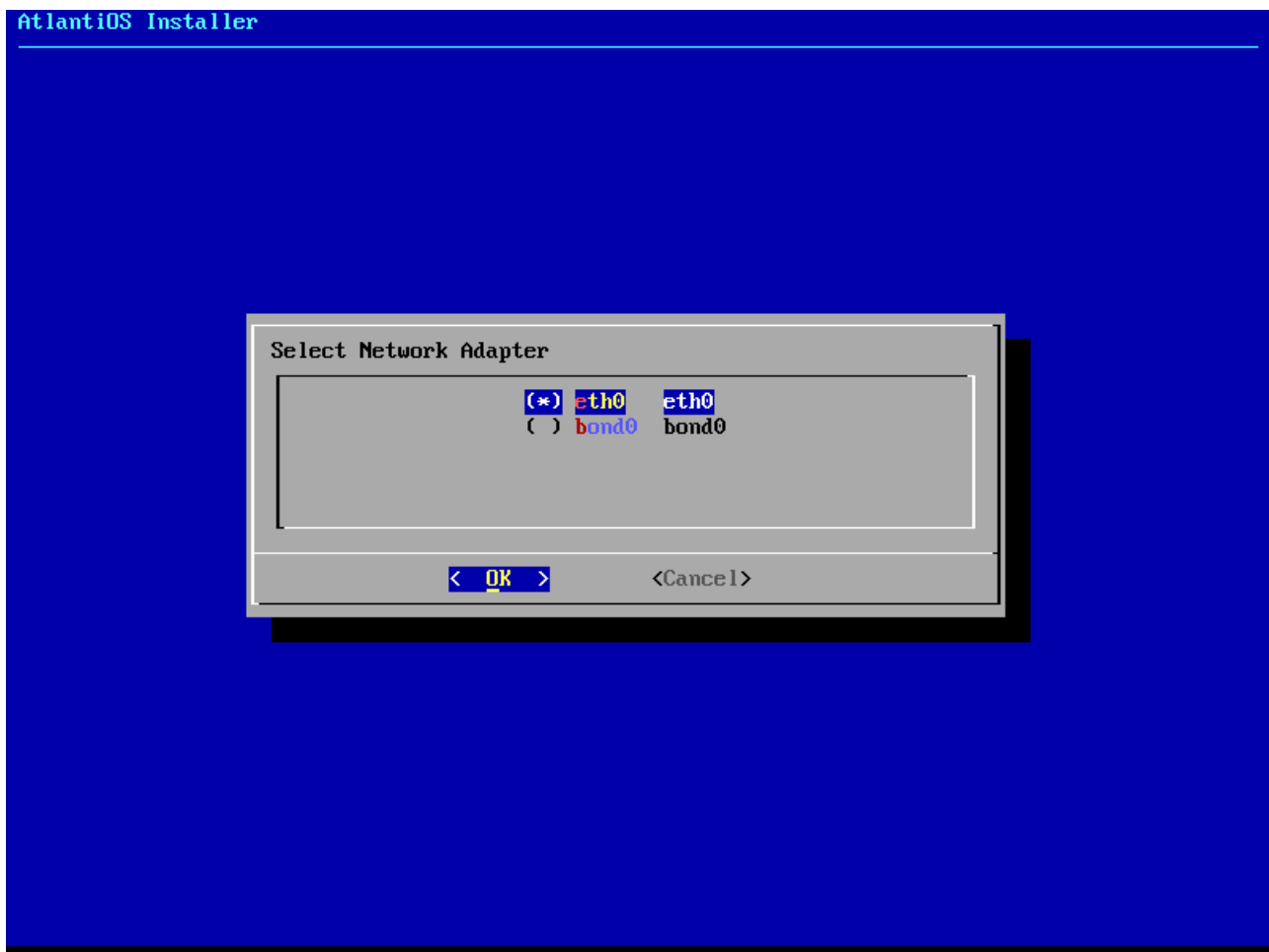


2.2) AtlantiOS Installer

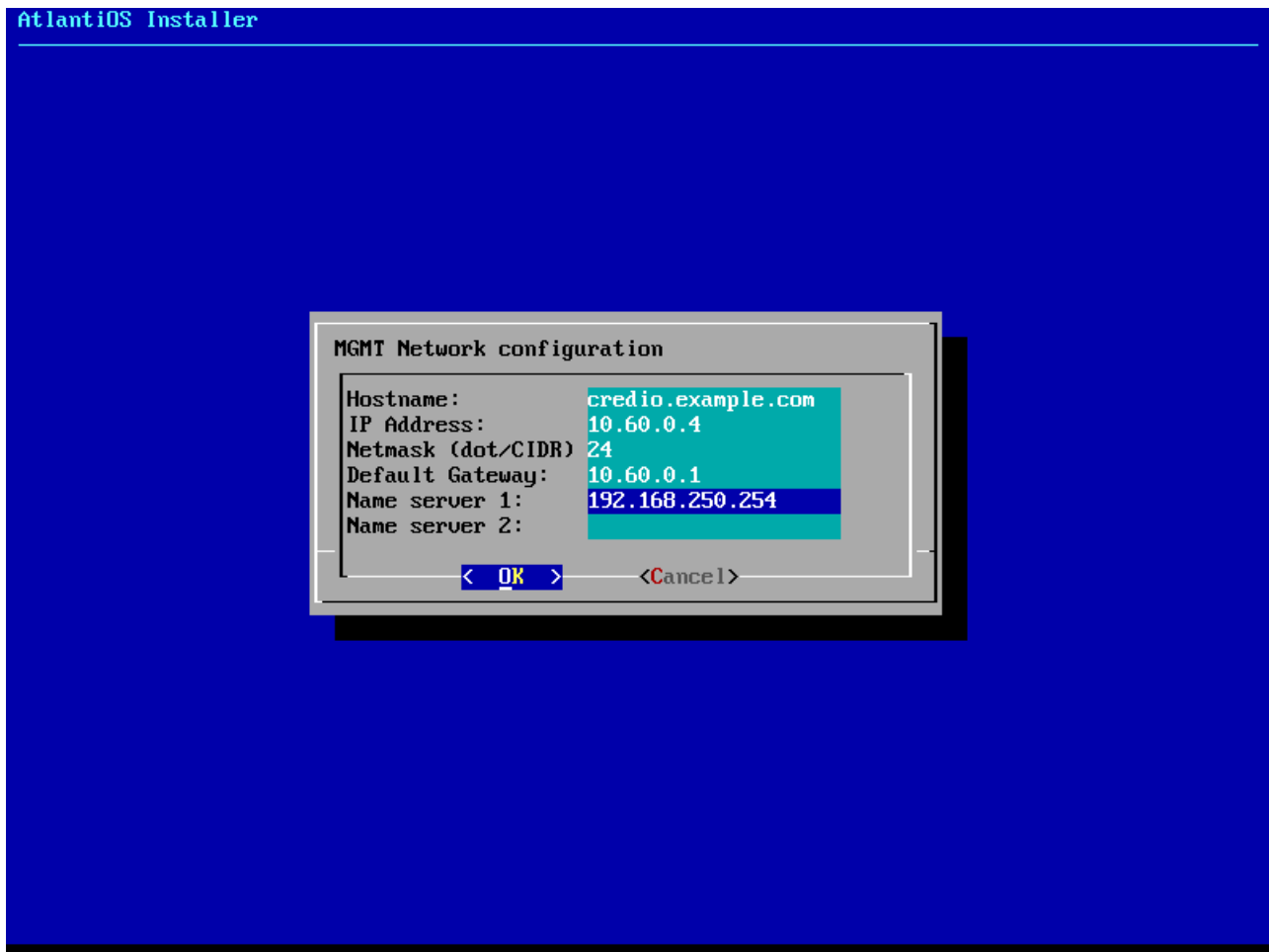


2.3) Management Network Configuration

2.3.1) Network Interface Adapter (NIC) selection

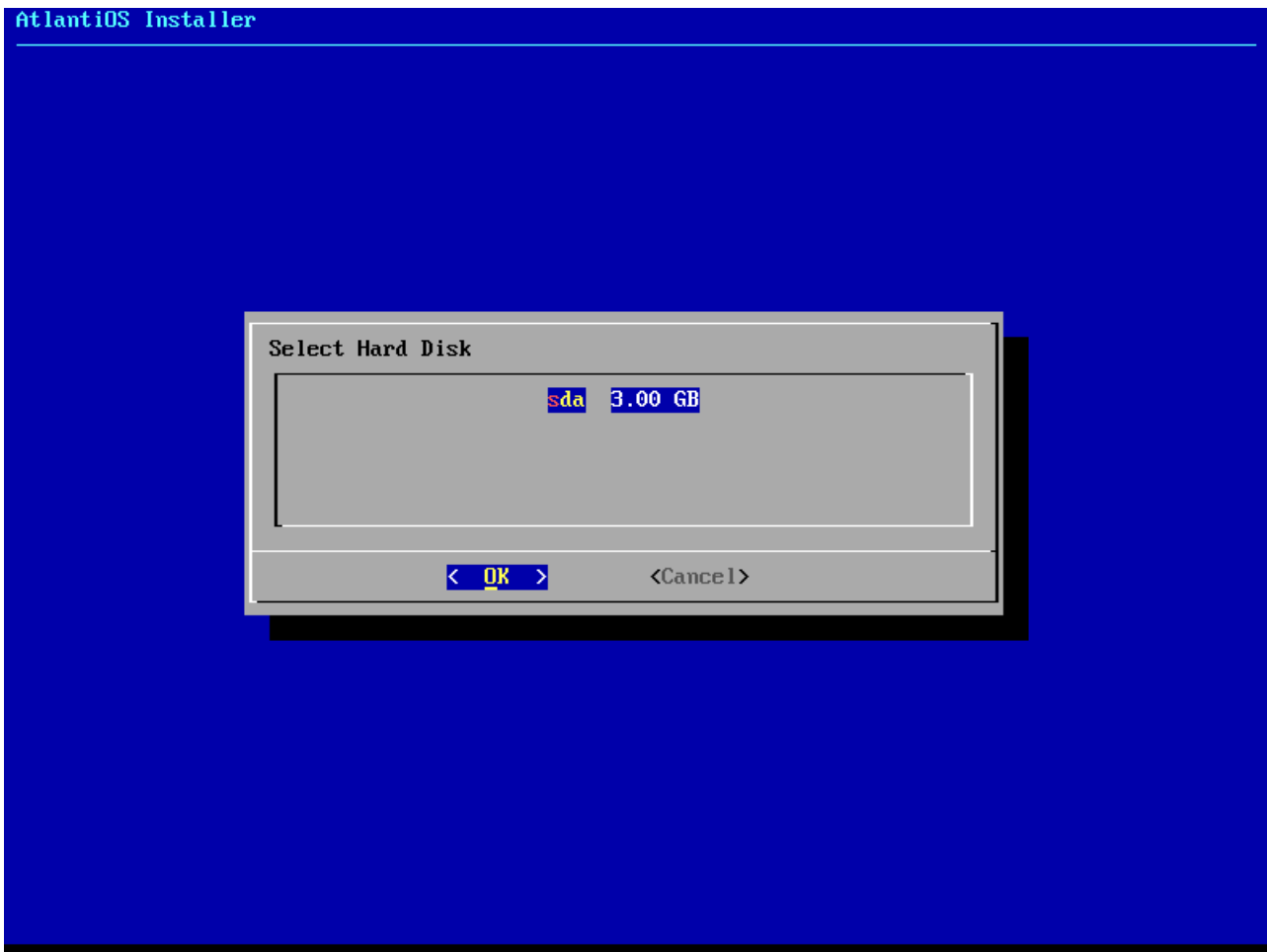


2.3.2) Management network configuration parameters

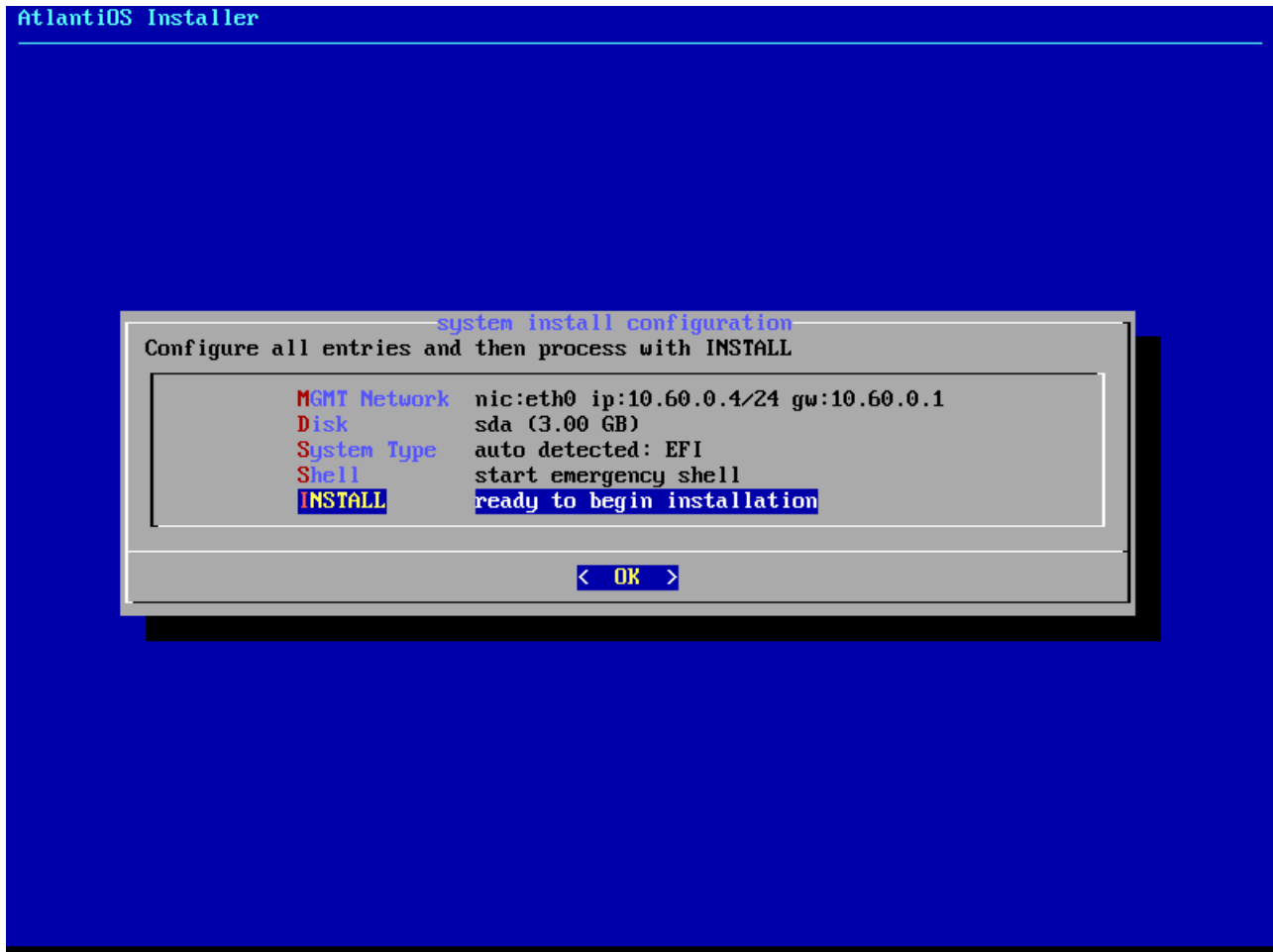


2.4) Disk configuration

2.4.1) Disk selection



2.5) Installation



Installation summary

MGMT Network:

NIC: eth0
IP Address: 10.60.0.4
Netmask: 24
Gateway: 10.60.0.1
NS1: 192.168.250.254
NS2:

Disk:

Device: sda
Partition /dev/sda1 - BOOT
Partition /dev/sda2 - OS
Partition /dev/sda3 - OS
Partition /dev/sda4 - Data

!!! WARNING !!! All data on disk /dev/sda will be erased !!!

Continue with installation ?

< Yes >

< No >

2.6) Boot AtlantiOS



2.7) AtlantiOS main screen

```
credio / Home AtlantiOS 1.0
```

Hostname: credio.example.com
MGMT IP: 10.60.0.4/24
Credio profile: (none)
Date: Wed Nov 16 10:08:08 UTC 2016, Uptime: 0d:02h:32m:09s
Load: 0.00/0.00/0.00, Memory (MB): 993 / 943 (free)
Disk: OS 50% 920M / 432M (free), DATA 1% 1023M / 950M (free)

```
1) Maintenance... 2) Services... 3) Shutdown...
```

www.atlantion.com

2.7.1) AtlantiOS Default Username and Password

AtlantiOS default credentials:

username: *root*

password: *password*

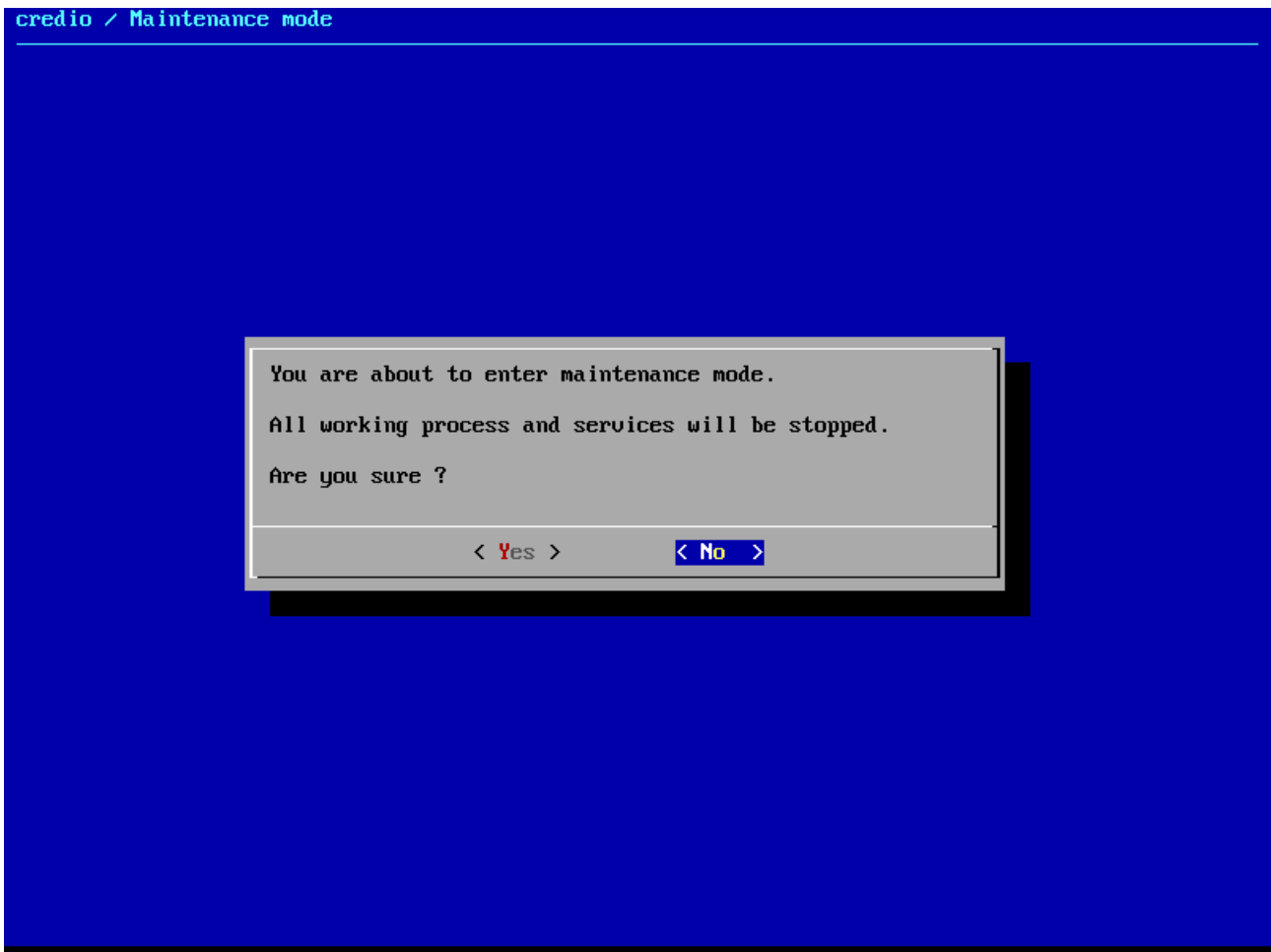
3. Configuration

3.1) Maintenance

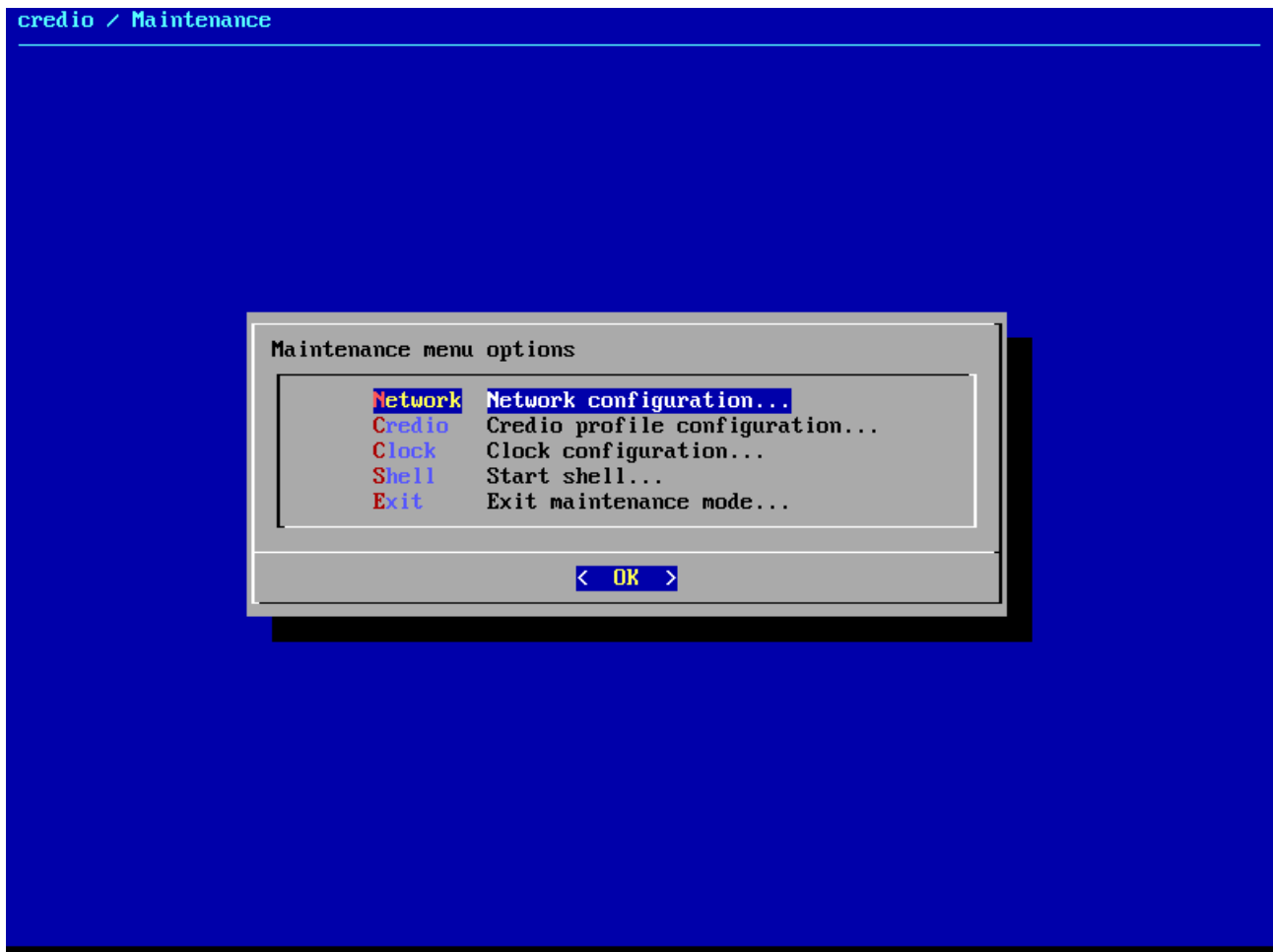
Note: While AtlantiOS is in maintenance mode all process and services will be stopped, all process and services will be started once again after maintenance mode exit.

3.1.1) Entering maintenance mode

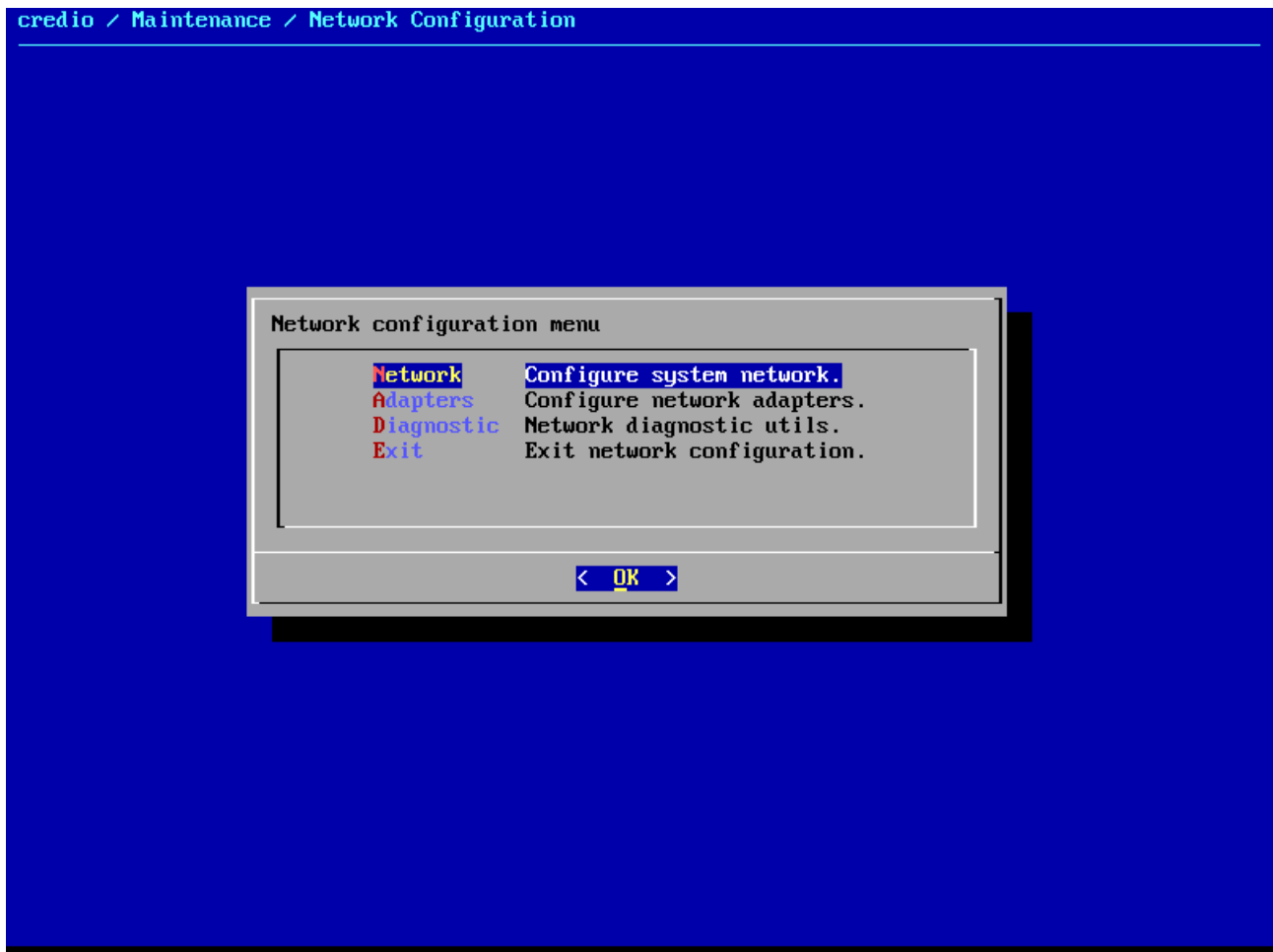
Entering maintenance mode by pressing 1 from main seen. After confirming entering in maintenance mode AtlantiOS will switch into maintenance mode.



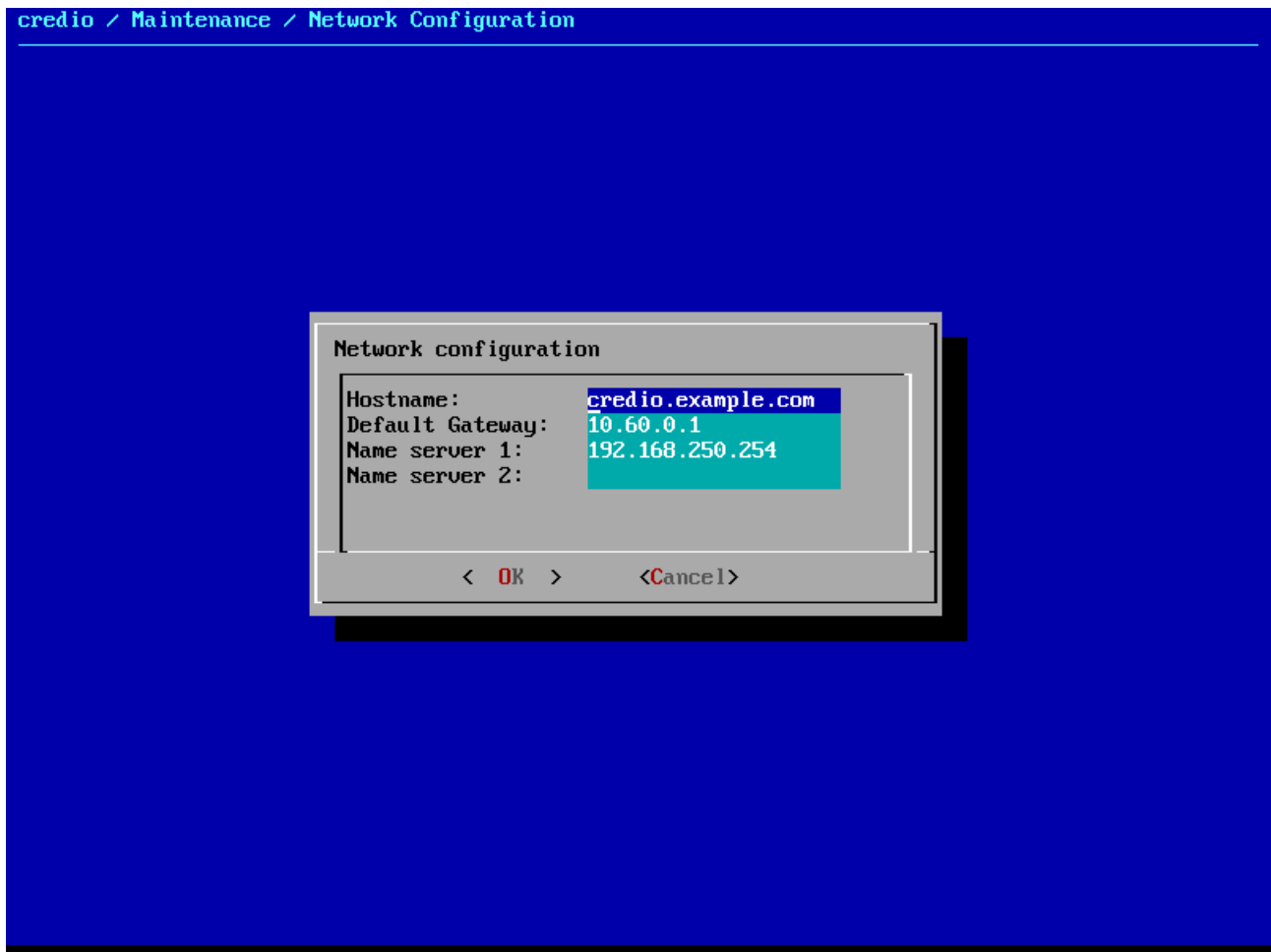
3.1.2) Maintenance mode main screen



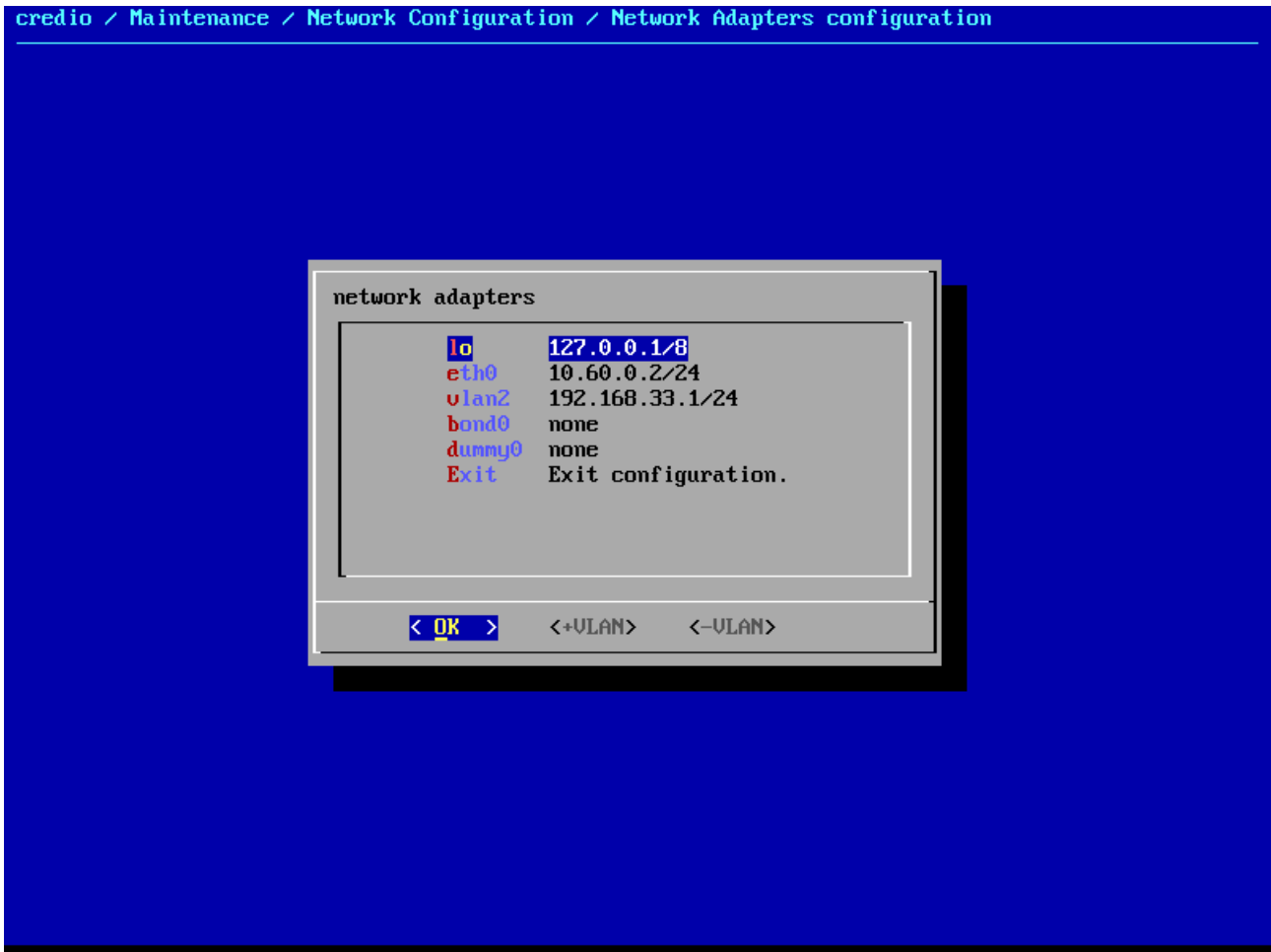
3.1.3) Network configuration



3.1.3.1) Hostname, DNS servers and Default gateway



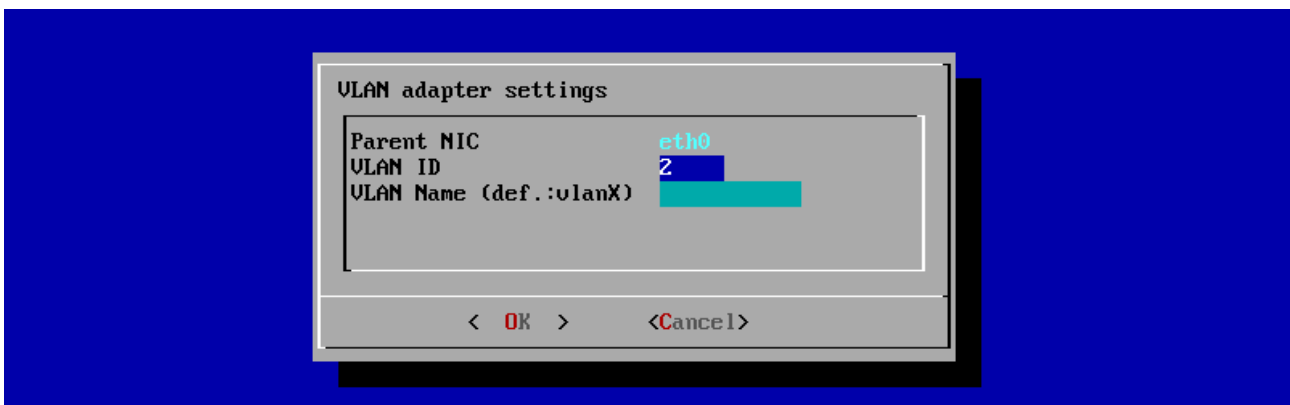
3.1.3.2) Network Adapters IP addresses



3.1.3.3) VLAN Interfaces

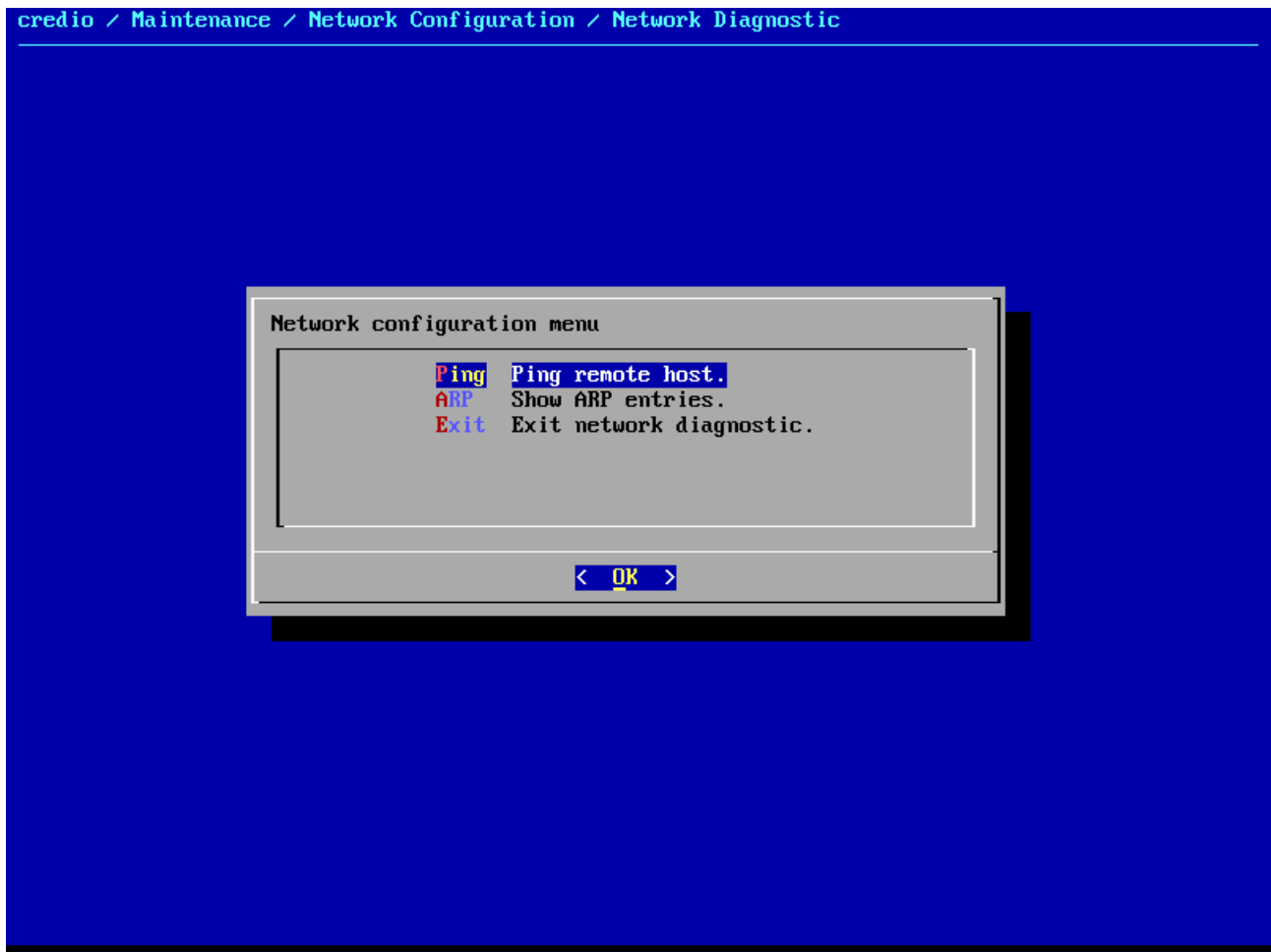
To create VLAN interface first navigate to Parent NIC into network adapter list then press <+VLAN>.

Enter VLAN ID and optional VLAN interface name, if no VLAN Name is provided the default name 'vlanX' will be used where X is VLAN ID.



To destroy VLAN interface navigate to VLAN interface into network adapter list then press <-VLAN>.

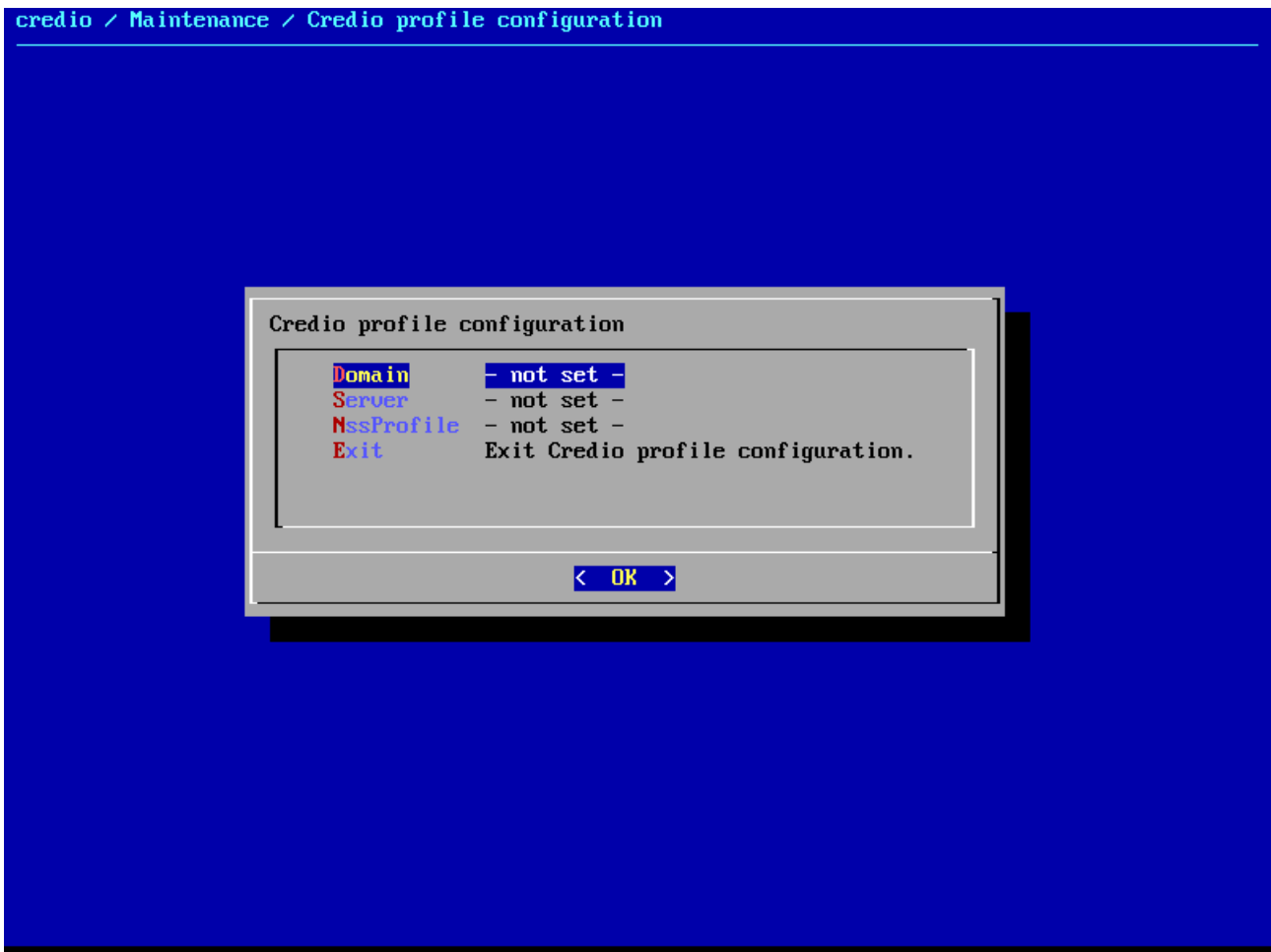
3.1.3.4) Network diagnostic tools



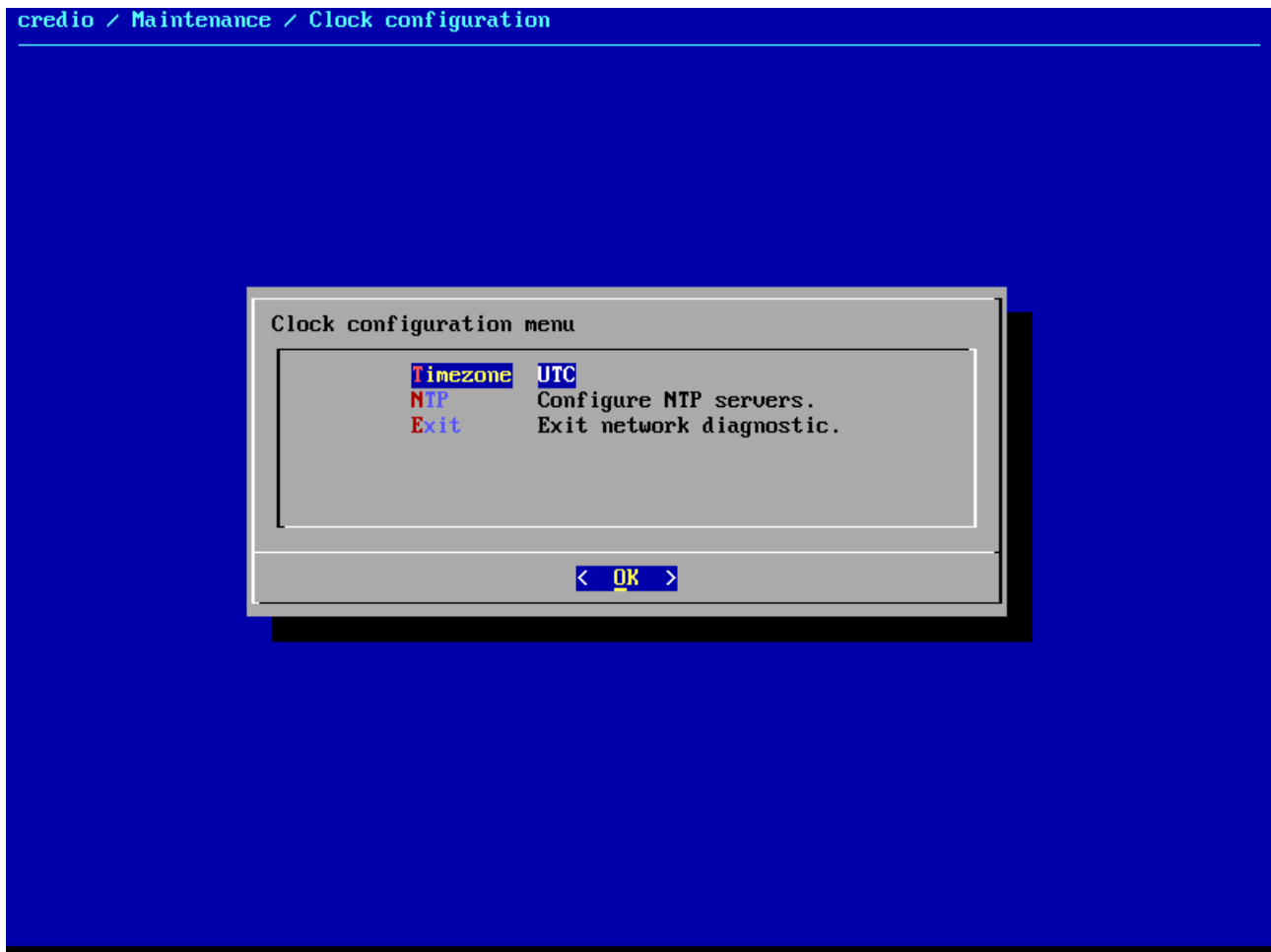
3.1.4) Credio profile configuration

Configuring Credio profile will allow all members of 'Administrators' group within given 'NSS Profile' in 'Domain' to be able to configuring this AtlantiOS server.

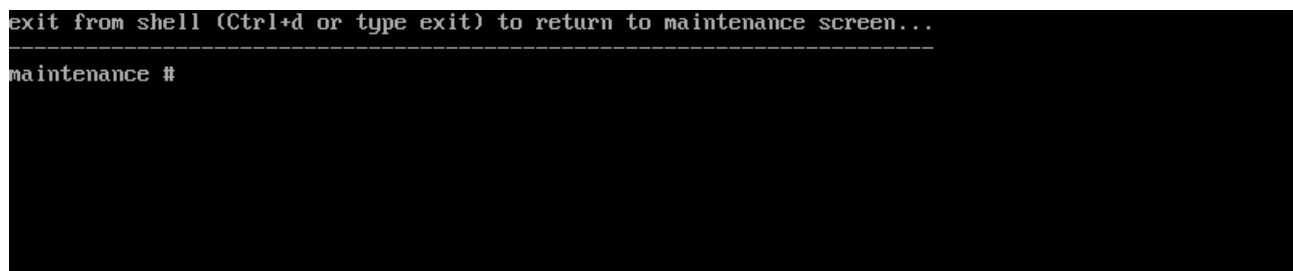
You can find more information for Credio NSS Profiles at <http://www.crediosys.com>



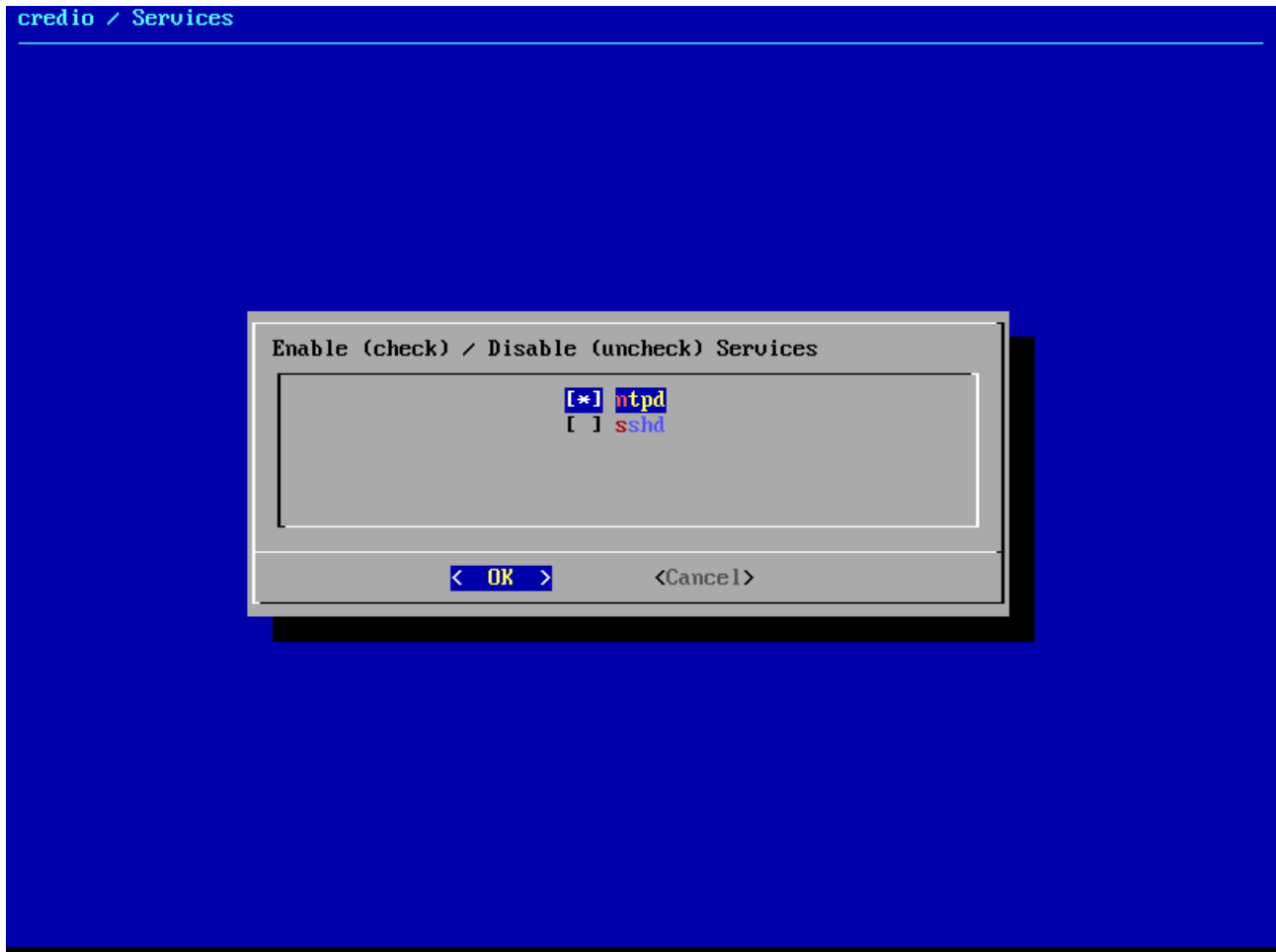
3.1.5) Clock configuration



3.1.6) Shell



3.2) Services



3.3) Reboot / Shutdown

